

Remote Capture
Quick Start Guide
Platform Services Version

All rights reserved
Big Sky Systems, Inc. 2021

Big Sky Systems, Inc.
PO Box 4401
Bozeman, MT 59772
406-223-5463
tom@bigskysystems.biz

Remote Capture
Program updated by Brandon Strong
Quick Start Guide updated on 1/24/2021

Contents

Page	Description
3	Preface
3	What is Remote Capture?
3	Licensing
3	Installation
5	Getting Started with Remote Capture
6	Starting Remote Capture
7	Connecting to DocuWare Cloud
8	Mail Server Configuration
9	Standard Import Job Configuration
14	Parsed Import Job Configuration
16	Job Control
17	Tray Icon



Remote Capture Quick Start Guide

Preface

This manual describes basic information to use the Remote Capture module.

What is Remote Capture?

This suite of software products enhances the functionality of the DocuWare Integrated Document Management system. Remote Capture uploads files from a folder structure into a DocuWare file cabinet and indexes the documents using folder and file names. Folder and file names can be parsed using regular expressions to allow for precise indexing from complex folder structures. Remote Capture can run as a one-time import or as a service that continually monitors a folder structure.

Licensing

You must have a valid license file for the module that you are installing ([Contact us to find out how to obtain a license](#)). This license should be placed in a **License** folder that you've created in the DocuWare directory or under the C:\ root drive on the local machine. If you receive a license file with a .zip extension, place the .zip in the license folder and double click to extract the license file.

Installation

Download Remote Capture from the StapleWare website at www.stapleware.com. Open the **Remote Capture.zip** or Remote Capture.zip setup utility. Double-click the **RemoteCaptureSetup_v.*.msi** and run the program from its current location. The install wizard will lead you through the setup process.

Note: If you're running this software and this installation is an upgrade - Please close the program, exit the services (*if applicable*), and uninstall the program before running this upgrade.

Installation - Licensing

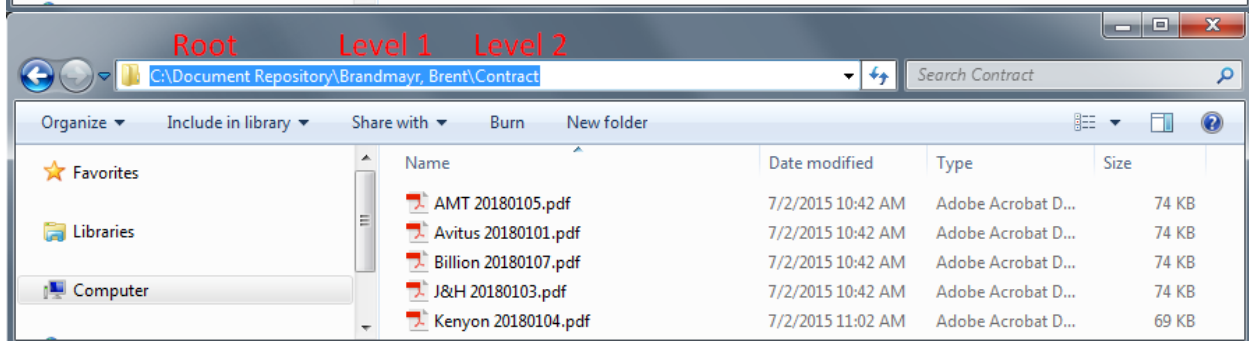
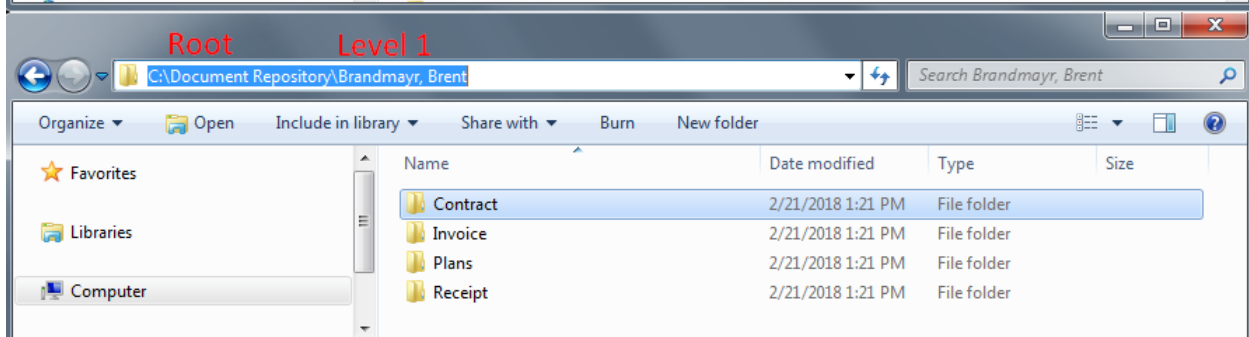
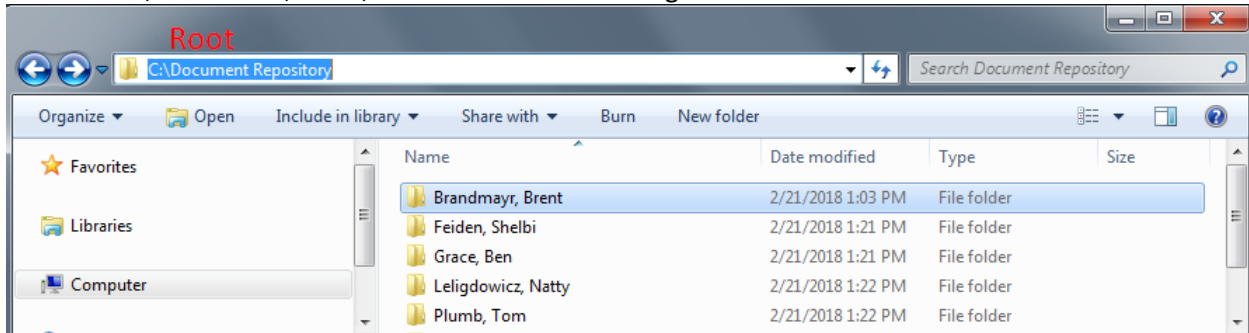
If you are starting Remote Capture for the first time the following message will appear when Remote Capture is started.



Click the **browse** button to select the correct license file from Windows Explorer.

Getting Started with Remote Capture

Remote Capture uploads files from a folder structure into a DocuWare file cabinet and indexes the documents using folder and file names. In the following screenshots, Remote Capture imports documents from the folder structure to a DocuWare file cabinet and indexes the DOCNAME, LASTNAME, FIRSTNAME, COMPANY, DATE, and DOCTYPE fields using folder and file names from the folder structure.

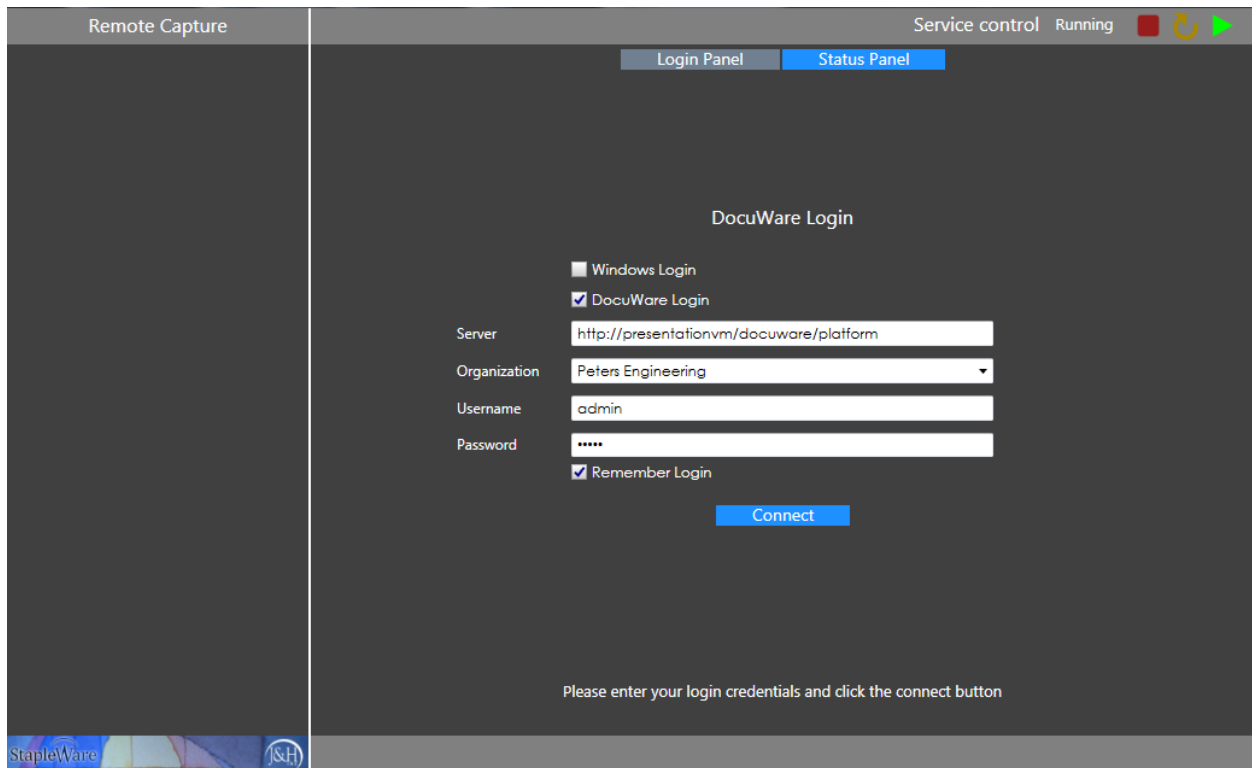


StapleWare - Modified Standard Search

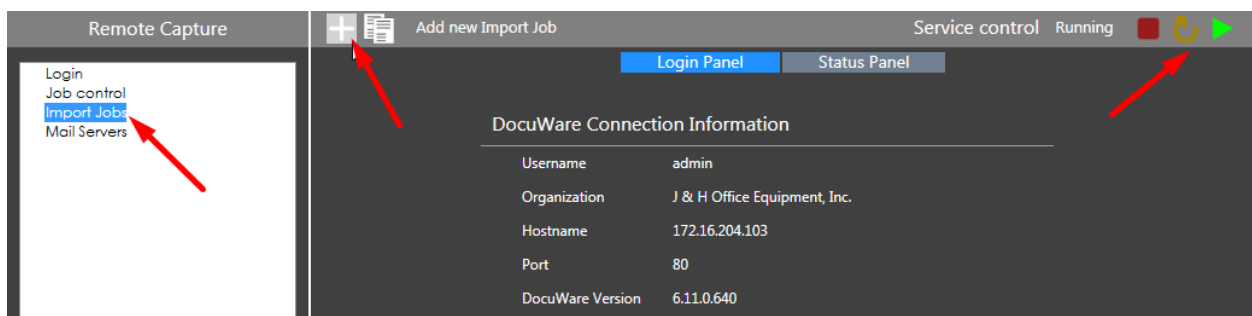
Type	DocName	Last Name	First Name	Company	Date	DocType	Status	Invoice #	Co
PDF	Kenyon 20180104	Brandmayr	Brent	Kenyon	01/04/2018	Contract	NEW		
PDF	J&H 20180103	Brandmayr	Brent	J&H	01/03/2018	Contract	NEW		
PDF	Billion 20180107	Brandmayr	Brent	Billion	01/07/2018	Contract	NEW		
PDF	Avitus 20180101	Brandmayr	Brent	Avitus	01/01/2018	Contract	NEW		

Starting Remote Capture

The Remote Capture user interface needs to be ran as an administrator. When opening Remote Capture, right click on the icon and select 'Run as administrator'. When Remote Capture opens you will be presented with the DocuWare login screen. Enter a DocuWare server URL, Organization, and DocuWare login credentials, then click 'Connect'.



The Remote Capture service can be controlled with the 'Service Control' buttons on the top right of the screen. From the menu tree you can configure Import Jobs and Mail Servers. To create configurations either select the menu item and click the '+' button or right click the menu item and select the 'Add Configuration' popup.



Connecting to DocuWare Cloud

Remote Capture works with DocuWare Cloud. Enter the DocuWare Cloud server URL, Organization, and DocuWare Cloud login credentials, then click 'Connect'. These credentials are the same as the credentials for the DocuWare Cloud Web Client.

DocuWare Login

Windows Login
 DocuWare Login

Server:

Organization:

Username:

Password:

Remember Login


[Connect](#)

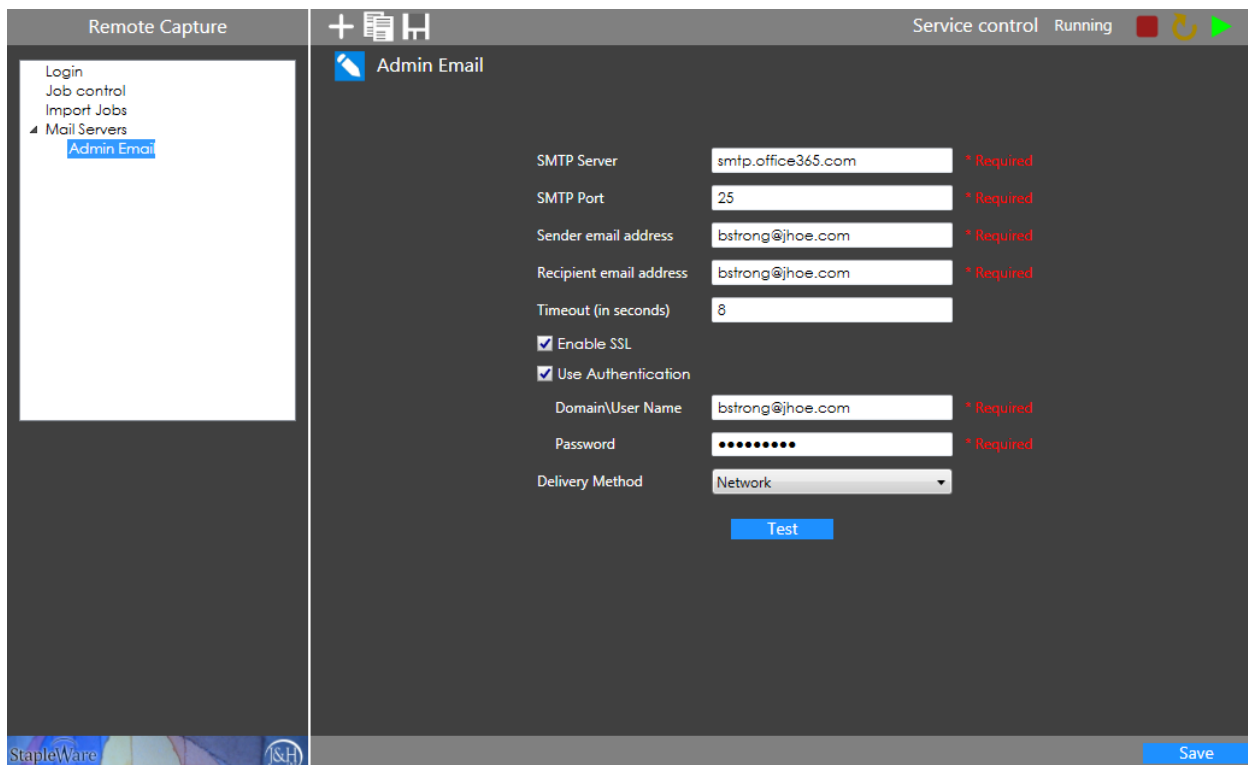
Please enter your login credentials and click the connect button

Mail Server Configuration

Mail Server configurations are used for e-mailing error logs to a system administrator.

Setup:

- 1) Create a new mail server configuration by right clicking on the 'Mail Servers' menu item and selecting 'New Mail Server'
 - 2) Click the Edit (pencil button) to name the mail server
- 
- 3) **SMTP Server** – IP address or name of the SMTP server
 - 4) **SMTP Port** – SMTP server port number
 - 5) **Sender Email Address** – Sender e-mail address
 - 6) **Recipient Email Address** – Recipient e-mail address
 - 7) **Timeout** – Number of seconds before timing out while attempting to send an e-mail
 - 8) **Enable SSL** – Use SSL for additional security
 - 9) **Use Authentication** – Username and Password for sender validation through SMTP server
 - 10) **Delivery Method** – Specify how emails will be distributed
 - 11) Click the 'Test' button to test the mail server configurations.



Field	Value	Requirement
SMTP Server	smtp.office365.com	* Required
SMTP Port	25	* Required
Sender email address	bstrong@jhoe.com	* Required
Recipient email address	bstrong@jhoe.com	* Required
Timeout (in seconds)	8	
Enable SSL	<input checked="" type="checkbox"/>	
Use Authentication	<input checked="" type="checkbox"/>	
Domain\User Name	bstrong@jhoe.com	* Required
Password	••••••••	* Required
Delivery Method	Network	

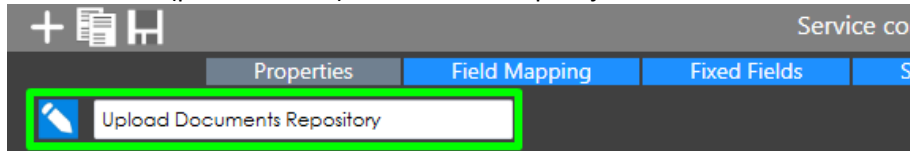
Buttons: Test, Save

Click 'Save' to save the configuration

Standard Import Job Configuration

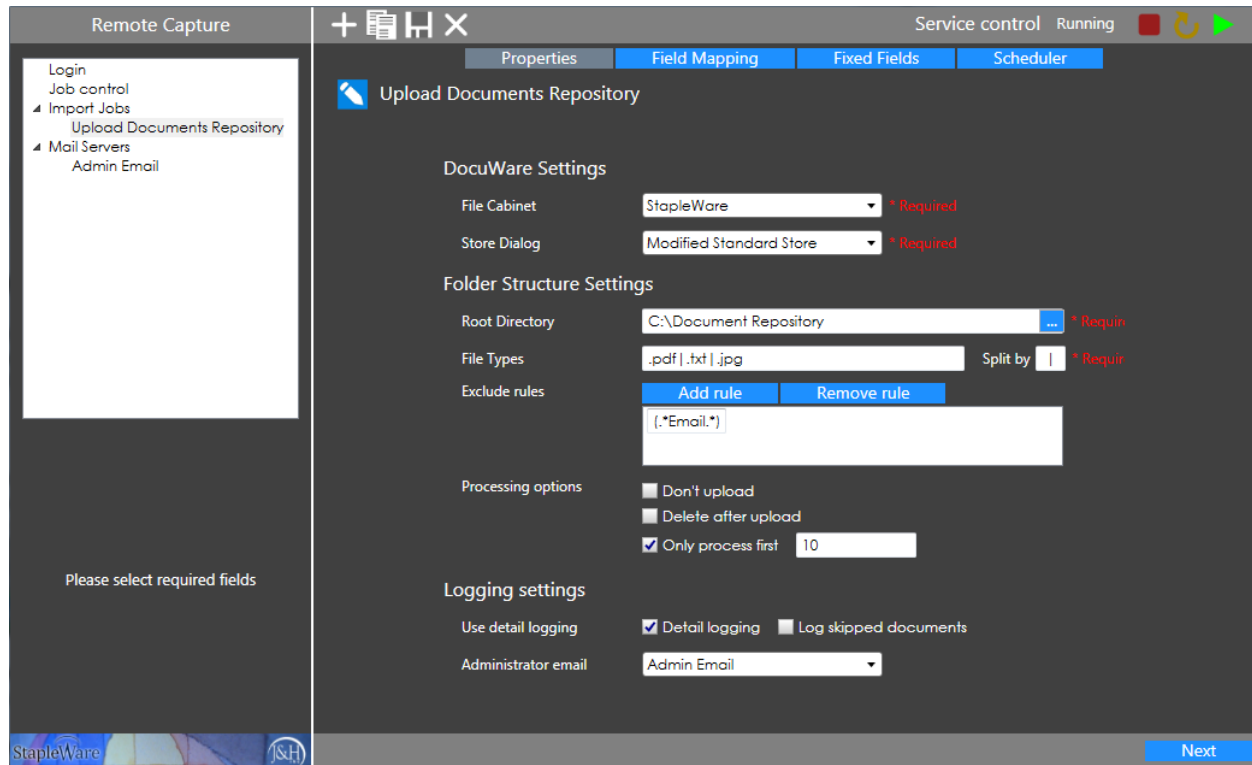
Setup

- 1) Create a new import job configuration by right clicking on the 'Import Jobs' menu item and selecting 'New Import Job'
- 2) Click the Edit (pencil button) to name the import job



Properties

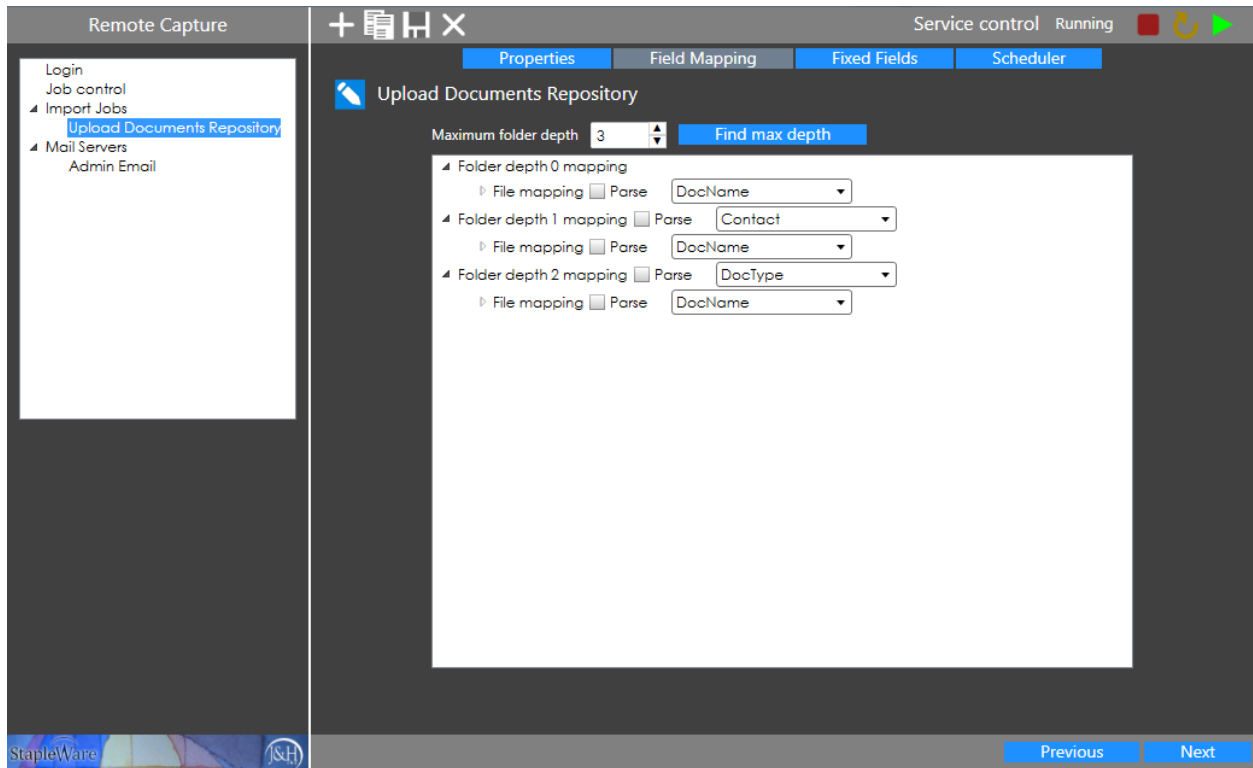
- 3) **File Cabinet** – Select the target DocuWare file cabinet.
- 4) **Store Dialog** – Select the correct Store Dialog for the selected file cabinet.
- 5) **Root Directory** – Root directory of the folder structure to store documents from
- 6) **File Types** – Filter for specific file types. Only the file extensions listed will be imported. Enter an asterisk [*] to upload all file types.
- 7) **Exclude Rules** – Regular expression rule to exclude files from upload. If the file path matches the regular expression the file will not be uploaded. Test regular expressions using a regex testing tool like www.regex101.com .
- 8) **Don't upload** – Don't upload documents from the folder structure. Ideal for testing the configuration when regex parsing is used. Can be used in conjunction with 'Detailed Logging'.
- 9) **Delete after upload** – Permanently delete documents from the folder structure that are successfully imported into DocuWare.
- 10) **Only process first** – Process a fixed number of documents. Enter the number of documents to import.
- 11) **Detail Logging** – Creates a log file with detailed information regarding how file paths are used to index documents. Log output is to: <C:\ProgramData\DWAddOns\Remote Capture\log>
- 12) **Log skipped documents** – Create event in the detailed log file for every document that is not uploaded due to an exclusion rule. NOTE: This can greatly increase the detailed log file size.
- 13) **Administrator email** – Select the correct mail server for sending error logs to a system administrator.



Click the 'Next' button to move to the 'Field Mapping' tab.

Field Mapping

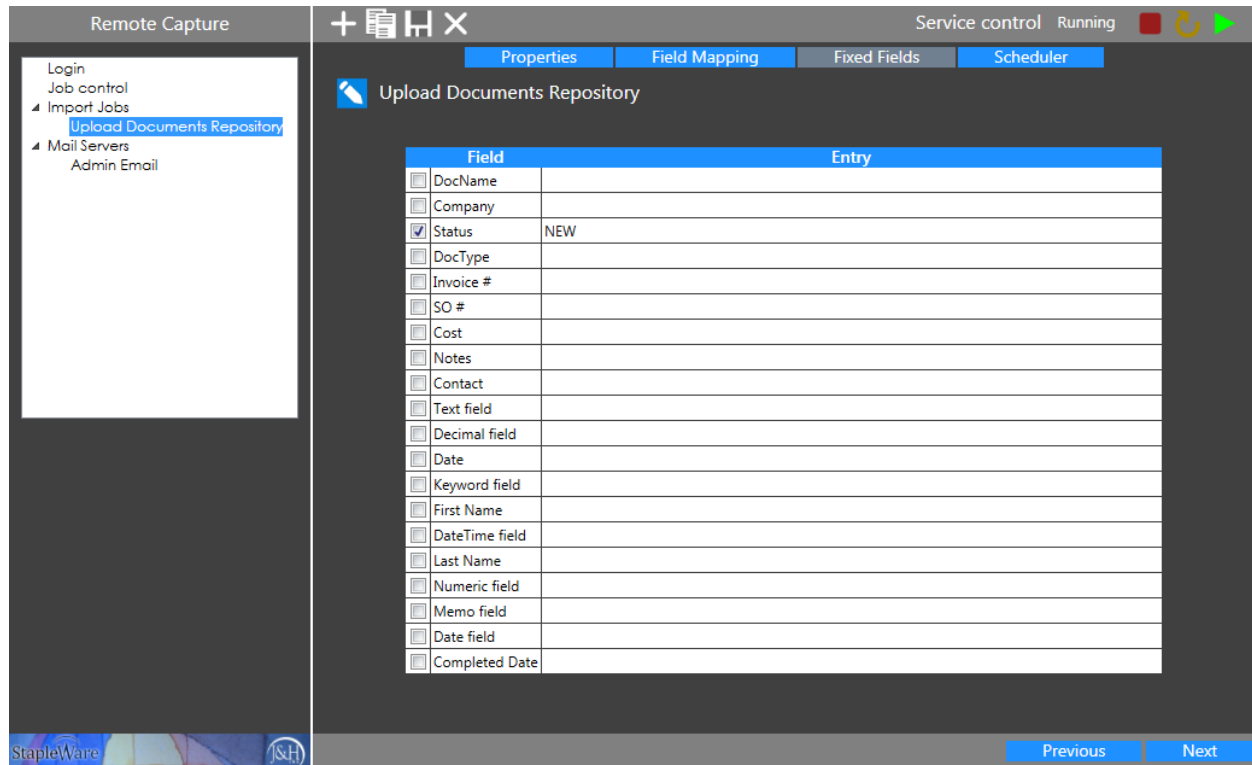
- 14) **Maximum Folder Depth** – Specify maximum folder depth for uploading documents. Click the 'Find Max Depth' button to automatically calculate the maximum folder depth within the root directory. NOTE: It may take a few minutes for large or network folder structures.
- 15) **Folder Depth X Mapping** – Define DocuWare index field to Folder Name mapping.
 - a. **Parse** – Parse the folder name into multiple DocuWare index fields using regex. Please refer to the 'Parsed Import Job Configuration' section for parsing instructions.
- 16) **File Mapping** – Define DocuWare index field to File Name mapping
 - a. **Parse** – Parse the file name into multiple DocuWare index fields using regex. Please refer to the 'Parsed Import Job Configuration' section for parsing instructions



Click the 'Next' button to move to the 'Fixed Fields' tab.

Fixed Fields

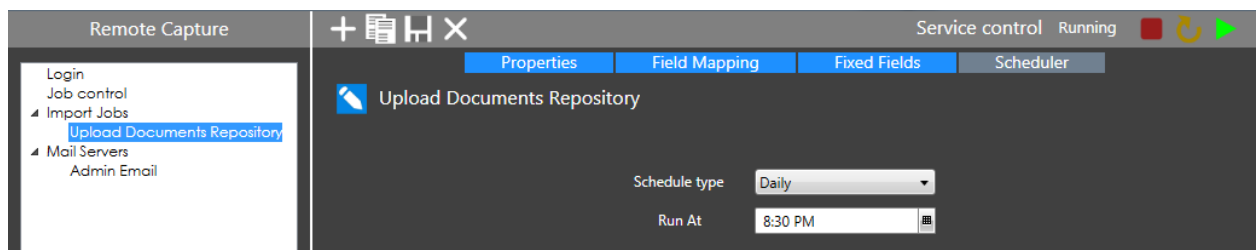
- 17) Select the checkbox next to a field to enable it for Fixed Entry
- 18) Type in the value into the Entry text box



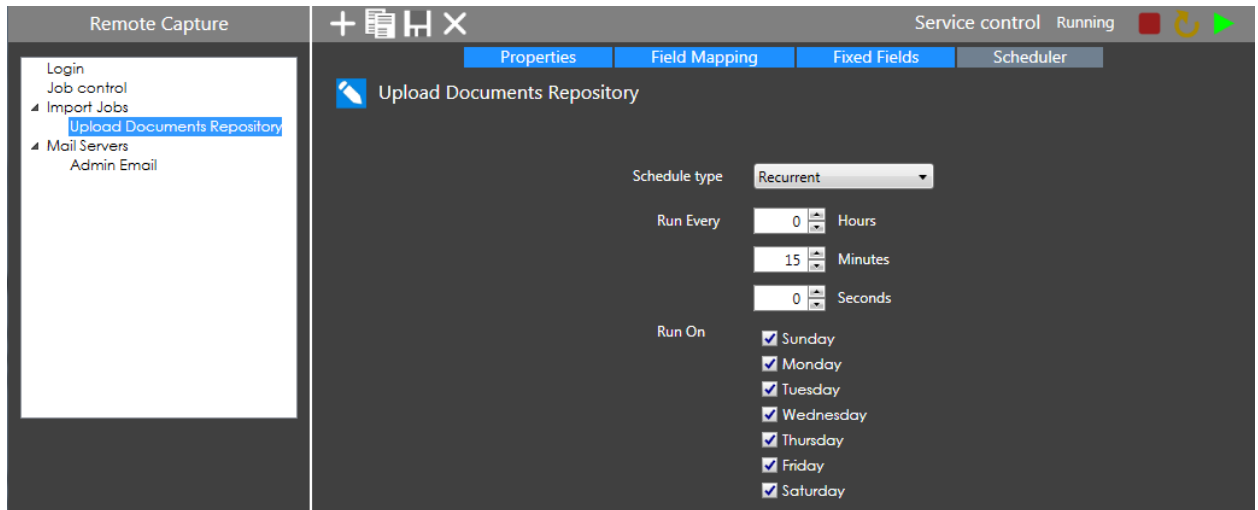
Click the 'Next' button to move to the 'Scheduler' tab.

Scheduler

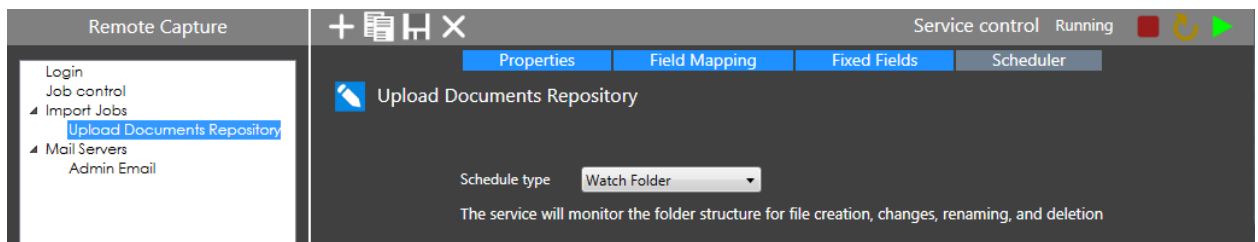
- 19) **None** – The job is not active.
- 20) **Daily** – The job will run once every day at the specified time.



- 21) **Recurrent** – The job will run on the specified days at the specified time interval.



22) **Watch Folder** – Folder structure will be monitored and documents will be imported into DocuWare upon actionable file events: Create, Modify, Rename or Delete.



Click the 'Save' button to save the Import Job.

Parsed Import Job Configuration

Import Jobs can parse folder and file names with regular expressions and use the capture groups to populate DocuWare index fields.

Field Mapping

- 1) Check the 'Parse' checkbox next to 'Folder depth X mapping' to parse the folder name.
- 2) Check the 'Parse' checkbox next to 'File mapping' to parse file names within the folder level.
- 3) **Add Regex** – Add a regex group to match
NOTE: Remote Capture evaluates regex groups in a linear order on each parse level. The first regex found that matches the file path will be used for parsing the file path and no further regex at that parse level will be evaluated.
- 4) **Delete Regex** – Delete the selected regex group
- 5) **Ignore Case** – Treat uppercase and lowercase the same when matching regex
- 6) **Match whole path** – Match the entire folder/file path instead of just this folder/file name.
NOTE: Ideal for changing field mappings based on which parent directory the folder or file is located in.

NOTES:

- The group mapping table rows in each parsing section will be automatically populated based on how many match groups there are in the regex. More specifically, every time an opening parentheses [(] is typed in the regex text box, a row will be added to the group mapping table.
- If you use multiple regex rules on a parse level, carefully plan the ordering so that the most appropriate rule for the parse level is matched first.
- Index fields will receive the value for the deepest folder/file level that they are matched to. For example, if COMPANY is set and matched to both folder levels 1 and 2, COMPANY will be set to the value at folder level 2.
- Test regular expressions using a regex testing tool like www.regex101.com .

Remote Capture

Service control Running

Properties Field Mapping Fixed Fields Scheduler

Upload Documents Repository

Maximum folder depth 3 Find max depth

Folder depth 0 mapping

File mapping Parse DocName

Folder depth 1 mapping Parse Contact

Parse Options:

Add Regex Delete Regex

(.*) (.*)

Ignore Case Match whole path

Group #	Field
1	First Name
2	Last Name

File mapping Parse DocName

Folder depth 2 mapping Parse DocType

File mapping Parse DocName

Parse Options:

Add Regex Delete Regex

(.*) ([\d]*\)

Ignore Case Match whole path

Group #	Field
1	Company
2	Date

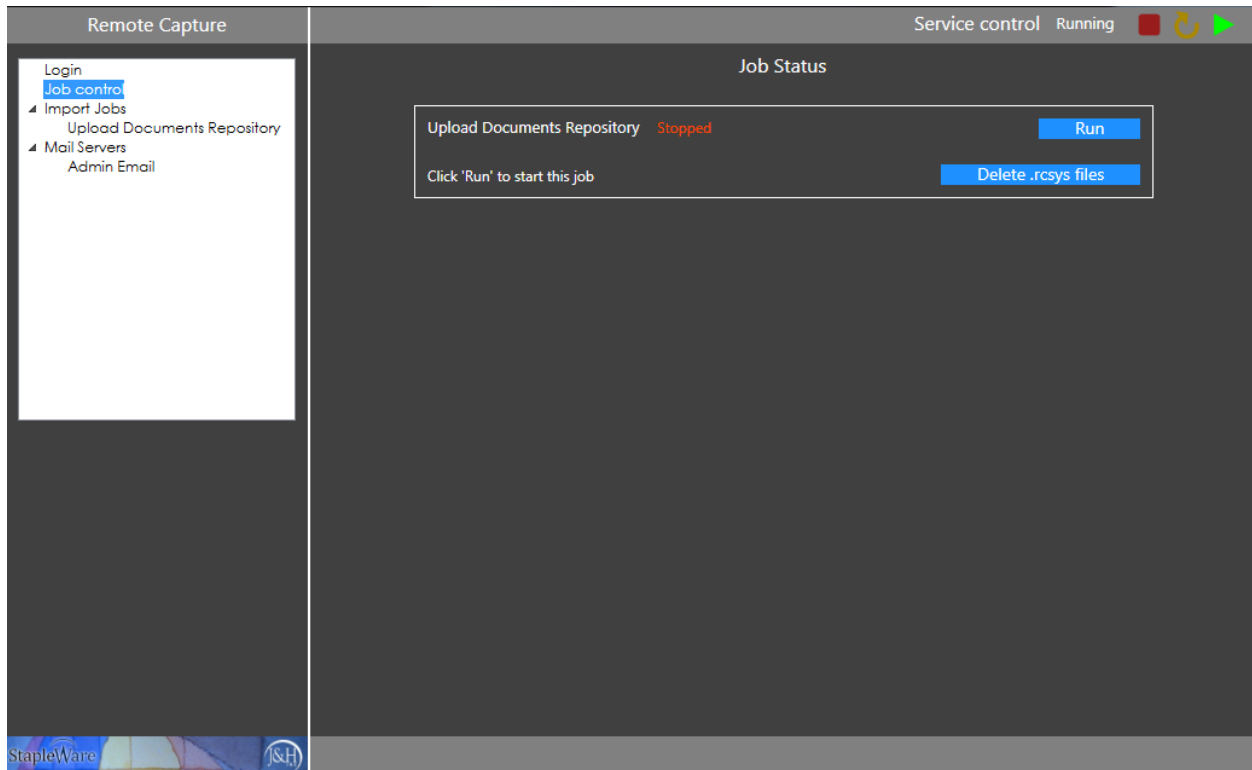
Previous Next

Click 'Next', 'Next', and 'Save' to save the Import Job.

Job Control

Import Jobs can be ran manually from the Job Control node. NOTE: Ideal for testing configurations before running on a schedule, or for running a one-time import into DocuWare. Click 'Run' to manually execute the job.

Delete .rcsys files – When Remote Capture uploads a file to DocuWare, a companion file is created with the extension .rcsys. Companion files track which documents have already been uploaded to DocuWare to eliminate duplicates. Clicking the 'Delete .rcsys files' button will purge companion files out of the folder structure. Companion files will not be created if 'Delete after upload' is enabled for the import job.



Tray Icon

Closing the Dialog

Click the Red 'X' in the top right corner of the Remote Capture dialog to minimize the configuration dialog to the Windows system tray.

Using the Tray Icon

Click the Remote Capture icon to access the tray icon menu.

- 1) **Exit** – Completely close Remote Capture. All import jobs running in the 'Job control' screen will be terminated.
- 2) **Settings** – Open the configuration dialog

